

breezway[®]

THE BREEZWAY IDEAS BOOK



Breezway®

Louver Windows

We think that Breezway Louver Windows are the best type of window available. They're stylish, versatile, energy efficient and totally customizable. We hope that by the time you've finished reading through this brochure, you'll agree with us.

Through this brochure you'll find:

- Ideas on how Breezway Louver Windows can enhance your home,
- Information on the energy efficiency of Breezway Louver Windows and
- Guidance through the various customizing options available.

We are available to answer your questions, chat through your needs or suggest a local Breezway Preferred Dealer. So visit our website breezway.com today for more information.

They don't make louvers like they used

Louver windows have changed significantly since we began manufacturing them in the late 1940's, but they are still a practical and stylish window choice.

Key features:

- Hurricane rated for wind and water to ensure maximum performance.
- Tight sealing due to the 'living hinge' and drainage channel design.
- Energy rated to meet building codes.
- Improved security available with easily fitted security screens.
- Manufactured exclusively from non-corrosive materials.
- Ideal window option for replacing old jalousies in high-rise Condo's.
- Tempered glass is available from our local factory in Honolulu to offer added safety for building occupants.
- Each window is made to order, allowing the widest choice of customizing options.
- Breezway Louvers with the Stronghold System pins louver blades in place to provide extra strength and safety in buildings and lanai enclosures.

breezway®



Free air in every room of your home. Keep your home comfortably cool, almost every day of the year, simply by opening it up. **Breezway Louver Windows** help you to create a living space that works with nature rather than against it. Breezway Louvers can also be left open in gentle rain and can be cleaned from inside the building (handy for multi-storey homes).

breezway[®]





Breezway Louver Windows in the **living room**

ought to be compulsory. Okay, we're a little biased about that. But think about it. Is there a better, more stylish way to have complete control of the air flowing through your living area?

breezway[®]



What every **bedroom** needs is a breath of fresh air. And the best way to get lots of fresh air inside is with **Breezway Louver Windows**. Concerned about wind and rain? The 'living hinge' design of Breezway Louver Windows ensures that, when fully closed, they seal tight to provide superior wind and water performance.

breezway[®]





Steam is good for locomotives, but not so good in your **bathroom**. Install exhaust fans if you wish, but really, the best option is to include **Breezway Louvers** in all your wet areas to let in fresh air and light.





If you can't stand the heat get some louvers in the **kitchen**.
Not only will they allow cool, fresh breezes in but they will
get rid of cooking smells and help dissipate the heat of your
oven or stove.

breezway[®]





Are you looking to renovate your home or enclose an outdoor area to make it more functional, regardless of what time of year it is? **Breezway Louver Windows** are the new-age, stylish window choice that can also be used to create **extra living space** and extend your outdoor time. Designed for tough outdoor conditions, Breezway Louvers open fully to allow fresh air in, yet seal tight to ensure protection from the elements.

breezway[®]

Powerlouver™

Windows



Motor is concealed within the head of the window frame.

Personal jet packs, holidays on the moon, windows that automatically open to cool your home, then close up in conjunction with other household equipment when you leave the house. The first two are still a way in the future, but **Breezway Powerlouver™ Windows** are available now in heights up to 8' 6-3/4" and 1' 3" wide. Powerlouver Windows can be controlled by the Appivate Control Unit to ensure a comfortable living environment.



A standard sized, touch sensitive wall switch for easy use. Single touch to fully open, fully close or open to an intermediate position.



Single and dual channel models available. Can operate multiple Powerlouver Windows for maximum ventilation.



Bluetooth® Smart module to permit control by compatible smartphones and tablets with a range of approximately 32ft – 64ft.



An in-built temperature sensor allows rooms to be naturally cooled or windows closed automatically to retain warmth when required.



Pre-set timers allow windows to be automatically set to operate in anticipation of the building occupant's daily routine.



'Night mode' allows the brightness of the LED light to be adjusted to minimise potential sleep disruptions.

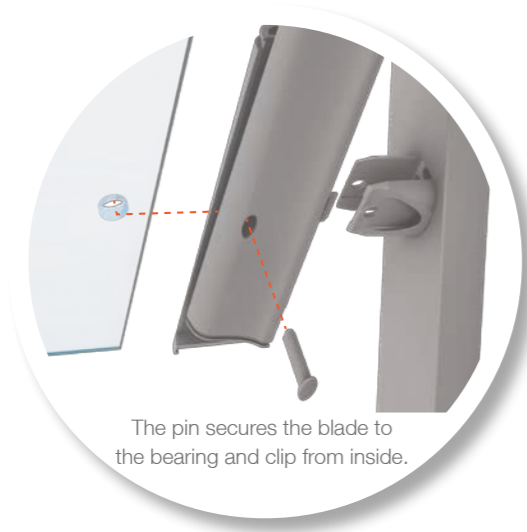
An award winning, sleek and elegant solution to electronically control your Breezway Louver Windows.



AWA Design Award Winner

Stronghold™ System

Breezway Louver Windows with the new Stronghold System have been specifically designed to achieve blade retention. The system allows you to gain the benefits of full ventilation whilst providing added safety to the entire window opening. To achieve this, a high strength acetal pin is inserted through the inside face of the Stronghold clip, through the bearing and a hole that is drilled into each end of the glass or aluminum blade.



The pin secures the blade to the bearing and clip from inside.

In multi-story applications or a lanai enclosure, extra living space can be created to ensure fresh trade winds are captured and enjoyed all year round.

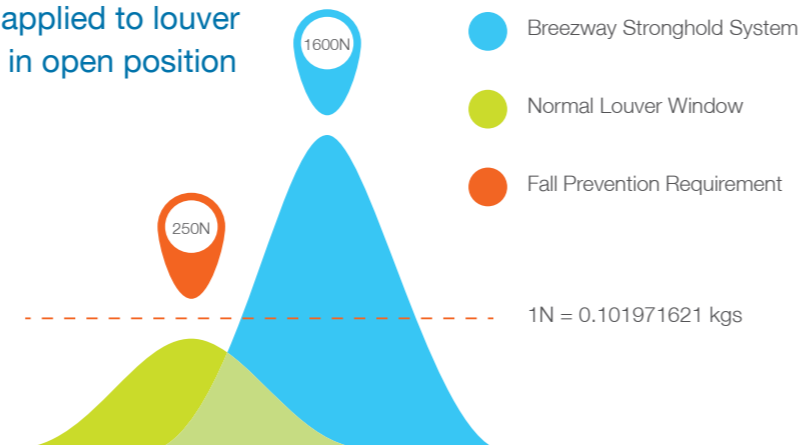
Breezway Louvers with the Stronghold System will withstand even the harshest weather conditions, making them a perfect alternative to shutters. The Window System can also be screened and offers privacy options when using aluminum blades.

Available within the Breezway ios or Makani Window Systems complete with 4" or 6" glass or aluminum blades.

The Stronghold System is a great, innovative window option for replacing old-style Jalousies in high-rise apartments.

Breezway Louver Windows with the Stronghold™ System are now the logical inclusion when extra strength and safety is required in residential dwellings or lanai enclosures.

Load applied to louver blade in open position



Maximizes natural ventilation where windows require fall prevention or extra strength.



ios[®]

Window System

Locally manufactured in Hawaii, the **ios[®] Window** offers **inside or outside screening options**. An innovative design that conforms to the performance requirements of AAMA standards and the amended International Building Code. It is the perfect aluminum framing option for bringing natural light and fresh air into your home, office, resort, government building or any other project.



The ios Window System is built for strength and durability, manufactured exclusively from stainless steel, aluminum and UV-stabilized industrial strength plastics to ensure years of trouble-free operation.

When open, Breezway Louver Windows capture cooling trade winds just as effectively as old style Jalousie Windows, and when closed, they seal tightly to provide superior wind and water performance.



“The ios[®] Window System allows screening options for your windows.”

Makani[™]

Window System

New generation Breezway Louver Windows are also available in the **Makani[™] Window** when **screening is not required**. Fully assembled and ready for installation, the Makani Window System is a sleek alternative for the old fashioned jalousies.



Locally manufactured from strong, corrosion resistant materials, the Makani Window System is a fully assembled framing option that replaces the Breezway Strip Hardware offer and is a good option for single wall construction with improved installation time. High quality polyester powder coating or 25 micron anodized finishes ensure a strong, durable framing system for years of trouble-free operation in a tropical, coastal environment.



“For when screening is not required the Makani[™] Window System is available.”



With a combination of Clear and Satina glass your privacy is maintained.

Glazing

Glass Options



Breezway® Louver Windows have a wide variety of **glazing options** to suit various climatic conditions.

In warm climates a primary consideration is to reduce the amount of hot sunlight that enters the home through the windows. In cooler climates low e coatings are beneficial as they increase the insulating properties of glass yet still allow free heating from the sun on cold days.



Clear Glass



Clear Low E Glass



Grey Tinted Glass



Bronze Tinted Glass

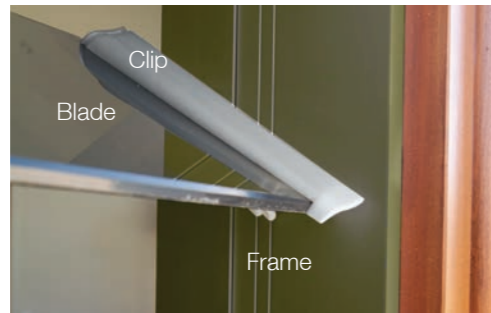


Satina Glass

Selection Guide

STEP 1 FRAME

When selecting your frame think about the design, colors, maintenance level and energy requirements of your home. There are three frame colors to choose from, with options to suit varied applications. Ask your Breezway Preferred Dealer to show you the choices available.



Aluminum

Aluminum frames are low maintenance and available in three colors; white, clear anodized and dark bronze anodized.



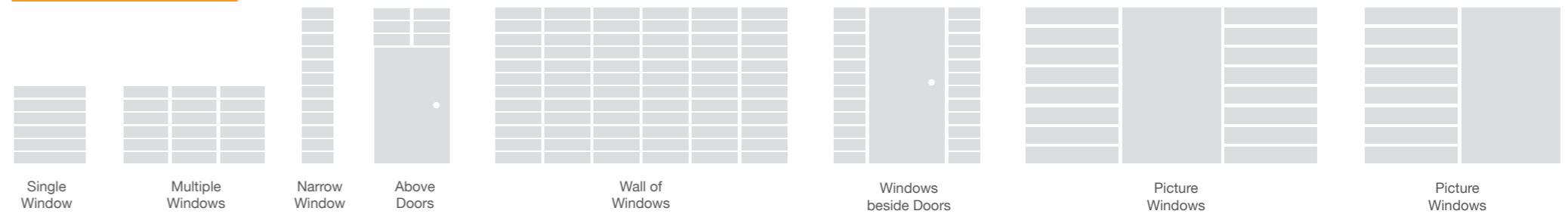
Insect Screens

Insect screens can be fitted to the inside or outside of Breezway ios Window Systems or other compatible systems. Please specify your requirements during frame selection.

Breezway® Louver Windows are available from your local preferred dealer. This selection process will help your Breezway Louver Windows be custom manufactured to suit your individual needs. Just follow these 7 simple steps.

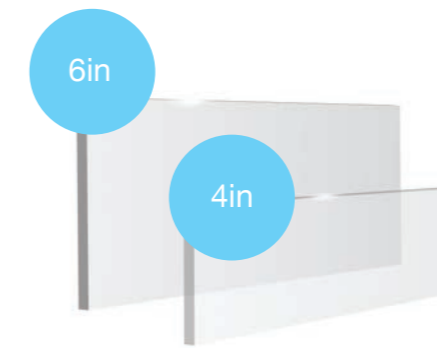
STEP 2 DESIGN

Breezway offers a range of sizes and shapes to provide greater flexibility within the home. Breezway Louvers can also be used within internal walls as room dividers to improve cross ventilation and building comfort through better airflow.



STEP 3 BLADE TYPE

Breezway offer a range of sizes and shapes to provide greater flexibility within the home. Breezway Louvers can also be used within internal walls as room dividers to improve cross ventilation and building comfort through better airflow.



Added strength & safety

Breezway Louvers with the Stronghold System mechanically retain glass and aluminum blades so you can gain the benefits of full ventilation and safety.



The pin secures the blade to the bearing and clip from inside.



Western Red Cedar

Let the breeze in and create privacy while reducing the amount of heat passing through the window.



Aluminum

Low maintenance, can't rust and never needs painting. Offered in a large variety of powder coats including decowood.



Glass

Clear, obscure, or tinted blades available for enhanced views and energy efficiency.



Tempered Safety Glass

Up to five times stronger than standard glass. If breakage occurs, the glass breaks into very small, square edged pieces.

STEP 4 CONTROL

Whether you prefer pulling a handle, pushing a button or operating an App, Breezway has a louver window perfect for you. Handle positions can be varied depending on the frame type for each individual requirement.



Powerlouver™ (No Handle)
Powerlouvers can be operated by the Appvivate Control Unit, Powerlouver App or Building Management System.



Standard
Fit the contours of the human hand for easy use.



Low Profile
For installation within some bi-fold and sliding doors.



Slide
Operate louvers when an inside screen is installed.



Ring
For out-of-reach applications operated by a sash pole.



Inside Screen
For inside screen access.

STEP 5 COLOR*

Breezway offers three standard colors; white, clear anodized and dark bronze anodized for Breezway Louver Windows that can be color matched to your handles and clips to provide consistency in your design.



* The colors and textures represented in this leaflet may vary under different light conditions and are indicative only.

STEP 6 SECURITY OPTIONS

Insect or security screens are available to further protect your building from insects or vandals.



Outside Screen



Inside Screen

Breezway®

Louver Window Standard Heights

This chart indicates standard window heights corresponding to the number of full blades used in standard Breezway Louver Window frames. For window heights differing from our standard dimensions, a fixed blade can be added to accommodate the difference.

Galleries/Strip Hardware can be fitted to a number of different window fabricator's frames, please contact your fabricator for their standard window heights.

STEP 7 CONTACT

Please contact your local Breezway Office to speak to a qualified louver window expert and locate your nearest Breezway Preferred Dealer or visit breezway.com

Powerlouver™ Window System heights (Insect screens can be fitted to the outside of this size frame)	ios® Window System	Makani™ Window System	Galleries/Strip Hardware only including Weatherstrip
---	--------------------	-----------------------	--

All dimensions are in inches

No. of Blades	Height 6"	Height 4"	Height 6"	Height 4"	Height 6"	Height 4"	Height 6"	Height 4"
2	14-19/32"	-	13-5/8"	-	13-19/32"	-	13"	-
3	20-1/8"	14-7/32"	19-1/8"	13-7/32"	19-3/32"	13-3/16"	18-1/2"	12-19/32"
4	25-5/8"	17-3/4"	24-21/32"	16-25/32"	24-19/32"	16-23/32"	24-1/32"	16-5/32"
5	31-5/32"	21-5/16"	30-5/32"	20-5/16"	30-1/8"	20-9/32"	29-17/32"	19-11/16"
6	36-21/32"	24-27/32"	35-21/32"	23-27/32"	35-5/8"	23-13/16"	35-1/32"	23-7/32"
7	42-5/32"	28-3/8"	41-3/16"	27-13/32"	41-5/32"	27-3/8"	40-9/16"	26-25/32"
8	47-11/16"	31-15/16"	46-11/16"	30-15/16"	46-5/8"	30-29/32"	46-1/16"	30-5/16"
9	53-3/16"	35-15/32"	52-7/32"	34-7/16"	52-5/32"	34-7/16"	51-9/16"	33-27/32"
10	58-11/16"	39-1/32"	57-23/32"	38-1/32"	57-11/16"	38"	57-3/32"	37-13/32"
11	64-7/32"	42-9/16"	63-7/32"	41-9/16"	63-3/16"	41-17/32"	62-19/32"	40-15/16"
12	69-23/32"	46-3/32"	68-3/4"	45-1/8"	68-11/16"	45-3/32"	68-1/8"	44-1/2"
13	75-1/4"	49-21/32"	74-1/4"	48-21/32"	74-7/32"	48-5/8"	73-5/8"	48-1/32"
14	80-3/4"	53-3/16"	79-3/4"	52-7/32"	79-23/32"	52-5/32"	79-1/8"	51-9/16"
15	86-1/4"	56-23/32"	85-9/32"	55-3/4"	85-7/32"	55-23/32"	84-21/32"	55-1/8"
16	91-25/32"	60-9/32"	90-25/32"	59-9/32"	90-3/4"	59-1/4"	90-5/32"	58-21/32"
17	97-5/16"	63-13/16"	96-5/16"	62-27/32"	96-1/4"	62-25/32"	95-21/32"	62-7/32"
18	102-13/16"	67-3/8"	101-13/16"	66-3/8"	101-25/32"	66-11/32"	101-3/16"	65-3/4"
19	-	-	107-5/16"	69-29/32"	107-9/32"	69-7/8"	106-11/16"	69-9/32"
20	-	-	112-27/32"	73-15/32"	112-25/32"	73-7/16"	112-7/32"	72-27/32"
21	-	-	-	77"	-	76-31/32"	-	76-3/8"
22	-	-	-	80-9/16"	-	80-1/2"	-	79-29/32"
23	-	-	-	84-3/32"	-	84-1/16"	-	83-15/32"
24	-	-	-	87-5/8"	-	87-19/32"	-	87"
25	-	-	-	91-3/16"	-	91-5/32"	-	90-9/16"
26	-	-	-	94-23/32"	-	94-11/16"	-	94-3/32"
27	-	-	-	98-9/32"	-	98-7/32"	-	97-5/8"
28	-	-	-	101-13/16"	-	101-25/32"	-	101-3/16"
29	-	-	-	105-11/32"	-	105-5/16"	-	104-23/32"
30	-	-	-	108-29/32"	-	108-27/32"	-	108-9/32"
31	-	-	-	112-7/16"	-	112-13/32"	-	111-13/16"



Hawaii

99-1451 Koaha Place, Suite 1
AIEA, Hawaii 96701
Telephone: 808 484 5999
Facsimile: 808 484 5959
Email: hawaii@breezway.com
Website: breezway.com

Australia

Breezway Head Office
35 Cambridge Street
Coorparoo QLD 4151
ABN 24 081 897 823
Telephone: +61 7 3847 0500
Facsimile: +61 7 3397 8643
Email: designassist@breezway.com.au

Malaysia

No. 39 Jalan Wawasan 3/KU 7
Sungai Kapar Indah
42200 Klang
Selangor Darul Ehsan
Malaysia
601783-T
Telephone: +60 3 3291 4885
Facsimile: +60 3 3291 9887
Email: malaysia@breezway.com

Your Breezway Louver Window Preferred Dealer.

